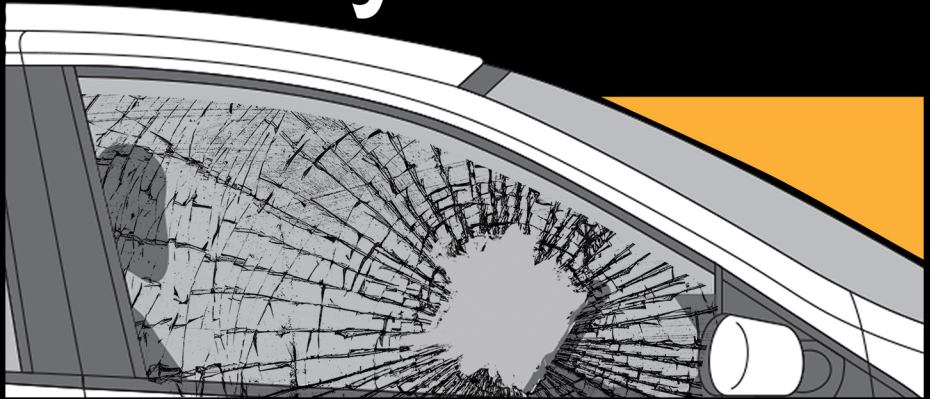


**LOCK your car.  
TAKE your stuff.**



**Don't be a victim  
of vehicle burglary.**



**SHERIFF**  
SEMINOLE COUNTY



SHERIFF DENNIS M. LEMMA  
SEMINOLESHERRIFF.ORG  
407-665-6650

# Practice these tips:

- Always lock your parked vehicle.
- Never leave your vehicle unattended while it's running.
- Remove valuables and items with personal information (wallet, cell phone, checkbook, electronics, etc.).
- Be aware of people looking into parked vehicles and report suspicious activity to law enforcement immediately.
- Don't keep spare keys, valet keys, or your garage door opener inside your vehicle.



SHERIFF DENNIS M. LEMMA  
SEMINOLESHERRIFF.ORG  
407-665-6650